



PROMAPRESS

User's guidelines for heat transfer press

PROMASHIRT

TS-4050EAE

Serial N° of the press:



**Address: 7 bis, Impasse Denis Dulac
94700 MAISONS-ALFORT-PARIS
FRANCE**

Phone: +33 141 79 00 45 - Fax : +33 141 43 53 93 57

Website : www.promattex-international.com - e-mail : info@promattexint.com



USE OF PRESS

PromaShirt TS-4050EAE is an evolutive heat press for transfer on T-shirts and other supports. This is a single-station press with clam-shell opening and manual closing of the heat plate with holding by the electromagnet.

This press is equipped with a U-form stand allowing to pull easily on the lower plate all kinds of garment (T-shirts, bags etc).





TECHNICAL FEATURES

PRESS TS-4050EAE	
Weight netto	40 Kg
Height (working position)	900 mm
Depth (working position)	750 mm
Width (working position)	420 mm
Dimensions of lower plate	400 x 500 mm
Voltage	220 V + Ground
Power	2.2 KW
Amperage	10 A
Electronic temperature regulator with digital display	
Temperature range	0 to 230°C
Electronic timer	
Time range	0 to 999 Sec

MAIN COMPONENTS



- 1 – Main switch
- 2 – Temperature and time control panels
- 3 – Closure handle
- 4 – Pressure adjusting screw (knurled knob)
- 5 – Heat plate
- 6 – Lower plate
- 7 – Screw for the replacement of the lower plate

CONTROL PANEL



- A – Temperature display
- B – Time display
- C – Temperature setting buttons
- D – Time setting buttons

INSTRUCTIONS GUIDE

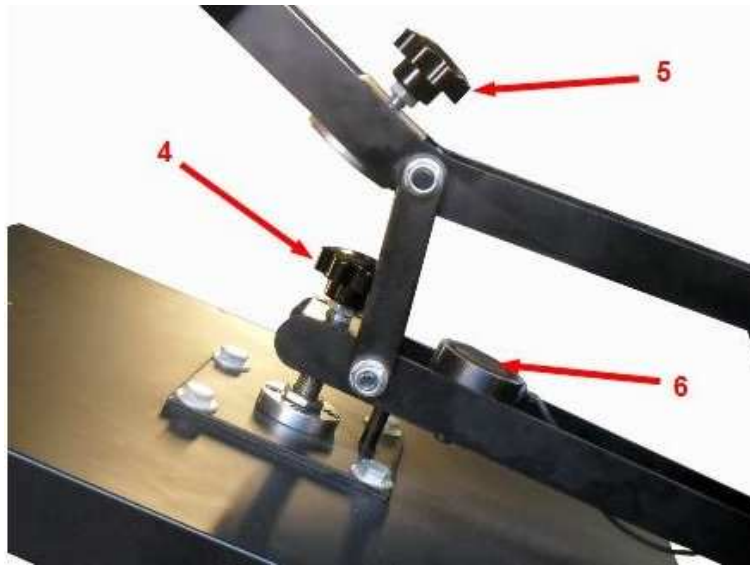
- A. The press must be placed on a stable and flat area.
- B. Check the voltage (the voltage reference is 220V/50Hz) and connect the power cable to the press (1).
- C. Switch on the press (1), the screen is on (A).
- D. The screen displays initialization.



- E. To set the transfer temperature, click **BRIEFLY** on button « **SET** ». On the left screen you see a value representing the programmed temperature. Press on “up and down” buttons to increase or decrease the set temperature. When you chose the temperature, press again on « **SET** » to validate it.
- F. To set the pressing time in seconds, click **BRIEFLY** on button « **SET** ». On the right screen you see a value representing the programmed time. Press on “up and down” buttons to increase or decrease the set time. When you chose the time, press again on « **SET** » to validate it.

PRESSURE SETTINGS

G. Adjust the pressure screwing or unscrewing the screw (knurled knob - **4**), pull down the heat plate with its handle (**3**), screw or unscrew the other knurled knob (**5**) so that it touches the surface of the support (**6**).



H. When the press reaches the necessary temperature*, place the support to be printed and the logo on the lower plate and close down the heat plate using the handle. (**3**). Once in the closed position, the heat plate will be locked due to the electromagnet.

I. The screen (**B**) shows the count down, the buzzer rings 3 seconds before the automatic opening of the heat plate.

K. The transfer is done.

* See the correspondent guidelines as to transfer conditions (time, temperature, pressure, weeding...).

KIT OF 4 LOWER PLATES (option)

The kit of 4 plateaux can be used with your press PromaShirt TS-4050EAE. You can buy it together with the press or later.

Different formats of lower plates allow to print easily: short and long sleeves, pant legs, sport shorts, working clothing, bags, umbrellas etc.



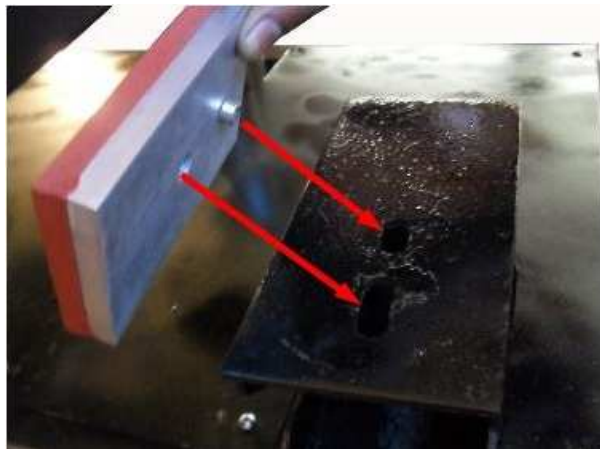
To fix one of these plates on PromaShirt TS-4050EAE, do as follows:

ATTENTION! To avoid premature wear out of screwings, do these operations at cold:

Take off the screw and remove the lower plate.



Once the basic plate removed, place the new plate on the press. The central hole of the stand is designed for the fixation screw. 2 other holes are designed for the bolt on the back part of the lower plate guaranteeing the strong fixation of the plate. Place the screw in the upper or left hole, depending on what orientation of lower plate you need.



And return the fixation screw to its place. Think of re-adjusting the pressure.

Each of lower plates can be fixed in 2 different positions, multiplying the printing possibilities of your heat presses.



CAUTION

- a. The press should be used carefully.
- b. Temperature level is very high, be carefully with skin burns.
- c. Pressure of the machine can be adjusted thanks to the closure handle. Pressure has been set from the factory and should not be changed while media is transferred.
- d. Turn off the machine while it is not in use.

SECURITY

This heat transfer press was designed for production according to the Law number L 233-5 from the French labour legislation in order to guarantee the user's safety.

This press was designed for the upfront use by the operator.

Any maintenance operation must be done with the press off and unplugged (power).

MAINTENANCE

EVERY DAY:

Clean the upper plate with a dry rag.

ACCORDING TO THE LEVEL OF USE:

Change the silicone rubber when it is damaged.

Grease steadily the parts which are subject to frictions (please consult us before).



GUARANTEE CONDITIONS

- Guarantee period starts from the day of the machine's delivery to the buyer for 1 year for all the mechanic parts including resistances.
- Guarantee is strictly limited to our material, and against material and executive defects. The buyer is responsible for proving the appointed defects.
- Our responsibility is limited to the obligation to rectify or replace the recognized and defective parts for free without the possibility for the buyer to claim any compensation for any reason.
The parts replaced under guarantee:
 - Stay our property
 - Are subject to an invoice. Once we have received the broken spare parts at our office, we provide you with the credit note cancelling this invoice. You should send the broken spare parts to us WITHIN MAXIMUM 1 MONTH after the intervention.

THE GUARANTEE DOES NOT COVER:

- Perishable materials such as: fuses, lights, transformers, joints, flexible shafts...
- Perishable materials are not our own manufacturing; therefore they are under their manufacturer's guarantee.

THE GUARANTEE DOES NOT APPLY:

- For replacements neither for repairs which would be the results of normal wear and tear from apparels and machines, deteriorations or accidents caused by negligence, supervision or maintenance lack or caused by changes without our written permission.
- In case of flaw from material provided by the buyer, neither a conception imposed by the latter.
- For repairs which would be the results of deteriorations or accidents from the freight.
- For maintenance operations and adjustments inherent to the machine's use and advisable in the maintenance instructions, such as: intermediate adjustments, pipes tightness etc... (do not apply in the guarantee conditions)



QUALITY CERTIFICATE

Product name: Press TS-4050EAE

Serial N° of the press:

This press is certified to be inspected and authorized for sale



PACKING LIST

- 1 heat press TS-4050EAE
- 1 cable of power supply
- 1 instructions guide

For any technical advice or spare parts orders :

Direct line : + 33 (0)1 41 79 00 45